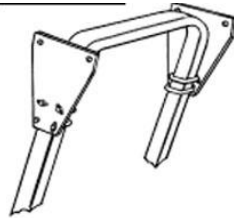


"D4 Series Sunshade" MOUNTING INSTRUCTIONS

Assembled Bracket & Hardware Components

- Qty - (2) Mounting Plates
- Qty - (2) 48" Mounting Tubes
- Qty - (8) 1/2" Serrated Flange Nuts
- Qty - (4) 3.25" Hex Cap Bolts
- Qty - (4) 3/8" Flat Washers
- Qty - (4) 3/8" x 1-1/2" Rubber Isolator Pad
- Qty - (4) 3/8" Neoprene Washers
- Qty - (4) 3/8" Nylock Nuts
- Qty - (2) Amber Reflectors
- Qty - (2) Red Reflectors



Unassembled Bracket & Hardware Components

- Qty - (2) Mounting Plates
- Qty - (2) 48" Mounting Tubes
- Qty - (4) 2.25" Hex Cap Bolt ***Bracket Assembly***
- Qty - (4) 3/8" Serrated Flange Nut ***Bracket Assembly***
- Qty - (8) 3/8" Flat Washers ***Bracket Assembly***
- Qty - (8) 1/2" Serrated Flange Nuts
- Qty - (4) 3.25" Hex Cap Bolts
- Qty - (4) 3/8" x 1-1/2" Rubber Isolator Pad
- Qty - (4) 3/8" Neoprene Washers
- Qty - (4) 3/8" Nylock Nuts
- Qty - (2) Amber Reflectors
- Qty - (2) Red Reflectors

Step 1: Mount side plates & Tubes (see diagram)

Step 2: Apply bracket assembly to ROPS using U-bolts & 1/2" serrated flange nuts supplied in hardware kit.

Step 3: Level bracket assembly roughly 4" below the top of the ROPS, side-to-side, and parallel to tractor frame

Step 4: Mount Loosely, the (8) - 1/2" serrated flange nuts to allow for adjustment in step 5

Step 5: Place sunshade onto tubes and level. Stand off from front of tractor and visually check front edge level to rear.

Step 6: Sunshade leveling complete, Securely tighten the (8) - 1/2" serrated flange nuts.

Step 7: With sunshade positioned full forward, centered side to side.

Step 8: Starting in either rear corner. Using rear tube hole as a guide, drill a 3/8" hole through sunshade letting the drill do the work. IMPORTANT: Do not force drill through the fiberglass sunshade.

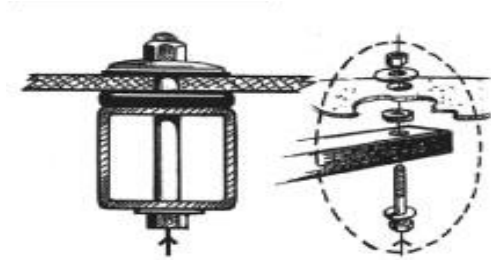


JOHN DEERE “3000/4000/5000” Series Tractor

Sunshade Part# “FAS-D4” Bracket/Hardware Part# “FAH-D4”

Step 9: Assemble mounting hardware loosely from the bottom of the tube through the top of Sunshade.

- Qty - (4) 3.25” Hex Cap Bolts
- Qty - (4) $\frac{3}{8}$ ” Flat Washers
- Qty - (4) $\frac{3}{8}$ ” x 1- $\frac{1}{2}$ ” Rubber Isolator Pad
- Qty - (4) $\frac{3}{8}$ ” Neoprene Washers
- Qty - (4) $\frac{3}{8}$ ” Nylock Nuts



Step 10: Confirm sunshade positioning and continue
corner.

onto the other rear

Step 11: Finish with the 2 front mounting points and then finish up by securing all four corners.

TRACTOR SUNSHADE
6010 N 53rd Dr
Glendale AZ, 85301



JOHN DEERE "3000/4000/5000" Series Tractor

Sunshade Part# "FAS-D4"

Bracket/Hardware Part# "FAH-D4"

IMPORTANT: Do NOT overtighten Sunshade bolts. The mounts are designed to "float" on rubber. Only secure enough to slightly "bulge" the rubber isolator pad with the nylock nut fully on threads.



TRACTOR SUNSHADE
6010 N 53rd Dr
Glendale AZ, 85301

Phone: 623-934-9340 Email: info@tractorsunshade.com Website: tractorsunshade.com