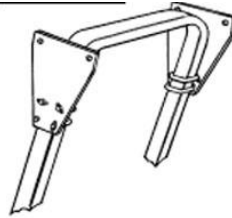


"D6 Series Sunshade" MOUNTING INSTRUCTIONS

Assembled Bracket & Hardware Components

- Qty - (2) Mounting Plates
- Qty - (2) Mounting Tubes (48")
- Qty - (4) 3 1/4" Hex Cap Bolts
- Qty - (4) 3/8" Flat Washers
- Qty - (4) 3/8" x 1-1/2" Rubber Isolator Pad
- Qty - (4) 3/8" Neoprene Washers
- Qty - (4) 3/8" Nylock Nuts
- Qty - (2) Amber Reflectors
- Qty - (2) Red Reflectors



Unassembled Bracket & Hardware Components

- Qty - (2) Mounting Plates
- Qty - (2) Mounting Tubes (48")
- Qty - (4) 3 1/4" Hex Cap Bolt ***Bracket Assembly***
- Qty - (4) 3/8" Serrated Flange Nut ***Bracket Assembly***
- Qty - (8) 3/8" Flat Washers *** Bracket Assembly***
- Qty - (4) 2 3/4" Hex Cap Bolts
- Qty - (4) 3/8" x 1-1/2" Rubber Isolator Pad
- Qty - (4) 3/8" Neoprene Washers
- Qty - (4) 3/8" Nylock Nuts
- Qty - (2) Amber Reflectors
- Qty - (2) Red Reflectors

Step 1: Apply bracket assembly by using the two existing bolts on the ROPS per side.

Step 2: Level bracket assembly.

Step 3: Place sunshade onto tubes and level.

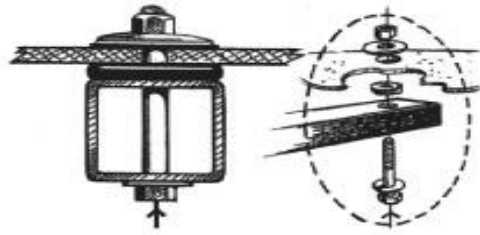
Step 4: Sunshade leveling complete.

Step 5: Starting in either rear corner. Using rear tube hole as a guide, drill a 3/8" hole through sunshade letting the drill do the work. IMPORTANT: Do not force drill through fiberglass sunshade.

Step 6: Assemble mounting hardware loosely from the bottom of the tube through the top of canopy



- Qty - (4) 3 1/4" Hex Cap Bolts
- Qty - (4) 3/8" Flat Washers
- Qty - (4) 3/8" x 1-1/2" Rubber Isolator Pad
- Qty - (4) 3/8" Neoprene Washers
- Qty - (4) 3/8" Nylock Nuts



Step 7: Confirm sunshade positioning and continue onto the other rear corner.

Step 8: Finish with the 2 front mounting points and then securing all four corners.

IMPORTANT: Do NOT overtighten Sunshade bolts. The mounts are designed to "float" on rubber. Only secure enough to slightly "bulge" the rubber isolator pad with the lock nut fully on threads



TRACTOR SUNSHADE
6010 N 53rd Dr
Glendale AZ, 85301