

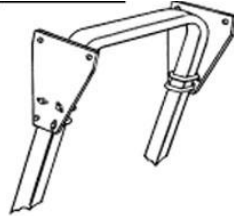


R & N -SERIES SUNSHADE / BRACKET & HARDWARE

MOUNTING INSTRUCTIONS

Assembled Bracket & Hardware Components

- Qty - (2) Mounting Plates
- Qty - (2) Mounting Tubes
 - 40" (RX-1 & NX Sunshade)
 - 48" (RX-2 & N2 Sunshades)
 - 52" (R1 & R2 Sunshades)
- Qty - (4) U-BOLTS
- Qty - (8) 1/2" Serrated Flange Nuts
- Qty - (4) 2-3/4" Hex Cap Bolts
- Qty - (4) 3/8" Flat Washers
- Qty - (4) 3/8" x 1-1/2" Rubber Isolator Pad
- Qty - (4) 3/8" Neoprene Washers
- Qty - (4) 3/8" Nylock Nuts
- Qty - (2) Amber Reflectors
- Qty - (2) Red Reflectors



Unassembled Bracket & Hardware Components

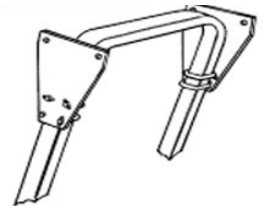
- Qty - (2) Mounting Plates
- Qty - (2) Mounting Tubes
 - 40" (RX-1 & NX Sunshade)
 - 48" (RX-2 & N2 Sunshades)
 - 52" (R1 & R2 Sunshades)
- Qty - (4) U-BOLTS
- Qty - (8) 1/2" Serrated Flange Nuts
- Qty - (4) 2-3/4" Hex Cap Bolts
- Qty - (4) 2-1/4" Hex Cap Bolt ***Bracket Assembly***
- Qty - (4) 3/8" Serrated Flange Nut ***Bracket Assembly***
- Qty - (8) 3/8" Flat Washers ***Qty - (4) Bracket Assembly***
- Qty - (4) 3/8" x 1-1/2" Rubber Isolator Pad
- Qty - (4) 3/8" Neoprene Washers
- Qty - (4) 3/8" Nylock Nuts
- Qty - (2) Amber Reflectors
- Qty - (2) Red Reflectors

Step 1: Mount side plates (see diagram A)

- **Important:** The lower round hole must always be towards the front.
- **Important:** Mount Loosely. These will have to be adjusted later.

Step 2: Measure ROPS overall outside width (side-to-side)

Diagram A



RX-1/RX-2/R1/NX/N1 Sunshades:

- ROPS over 36", tubes applied to the **INSIDE** of the mounting plate. (see diagram B)
- ROPS under 36", tubes applied to the **OUTSIDE** of the mounting plate (see diagram C)

Diagram B



R2 & N2 Sunshades:

- ROPS over 42", tubes applied to the **INSIDE** of the mounting plate. (see diagram B)

Diagram C

TRACTOR SUNSHADE
6010 N 53rd Dr
Glendale AZ, 85301

TRACTOR SUNSHADE

- ROPS under 42", tubes applied to the OUTSIDE of the mounting plate (see *diagram C*)



Step 3: Apply bracket assembly to ROPS using U-bolts/ ½" serrated flange nuts supplied in hardware kit.

Step 4: Level bracket assembly even with the top of the ROPS, side-to-side, and parallel to tractor frame

Step 5: Tighten the (8) ½" serrated flange nuts to allow for adjustment in step 4

Step 6: Place sunshade onto tubes and level. Stand off from front of tractor and visually check front edge level to rear. **IMPORTANT:** Position sunshade with exterior decal towards rear of tractor.

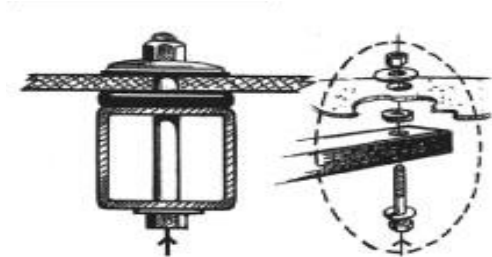
Step 7: Sunshade leveling complete, Securely tighten the (8) ½" serrated flange nuts.

Step 8: With sunshade positioned full forward, center side to side.

Step 9: Starting in either rear corner. Using rear tube hole as a guide, drill a ⅝" hole through sunshade letting the drill do the work. **IMPORTANT:** Do not force drill through fiberglass sunshade.

Step 10: Assemble mounting hardware loosely from the bottom of the tube through the top of canopy

- Qty - (4) 2-¾" Hex Cap Bolts
- Qty - (4) ⅜" Flat Washers
- Qty - (4) ⅜" x 1-½" Rubber Isolator Pad
- Qty - (4) ⅜" Neoprene Washers
- Qty - (4) ⅜" Nylock Nuts



Step 11: Confirm sunshade positioning and continue onto the other rear corner.

Step 12: Finish with the 2 front mounting points and then securing all four corners.

IMPORTANT: Do NOT overtighten Sunshade bolts. The mounts are designed to "float" on rubber. Only secure enough to slightly "bulge" the rubber isolator pad with the lock nut fully on threads

TRACTOR SUNSHADE
6010 N 53rd Dr
Glendale AZ, 85301

Phone: 623-934-9340 Email: info@tractorsunshade.com Website: tractorsunshade.com